

# edilportale<sup>®</sup>

## TOUR 2018

Efficienza Energetica, Antisismica,  
Comfort Abitativo, NTC2018, Illuminazione,  
Acustica, BIM, Realtà Virtuale

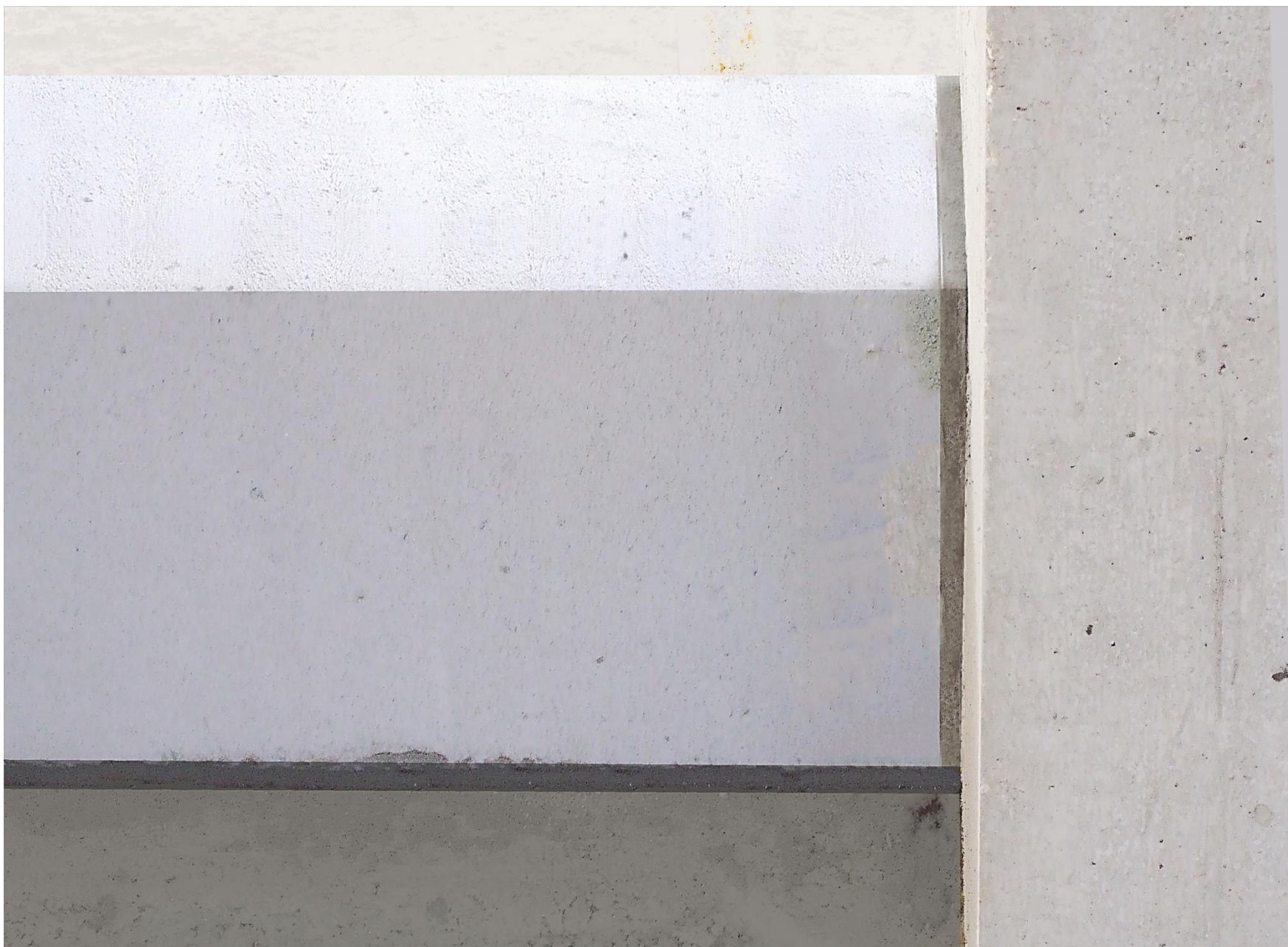
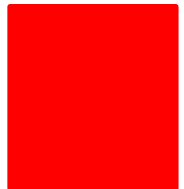
**TORINO, 30 MAGGIO 2018**

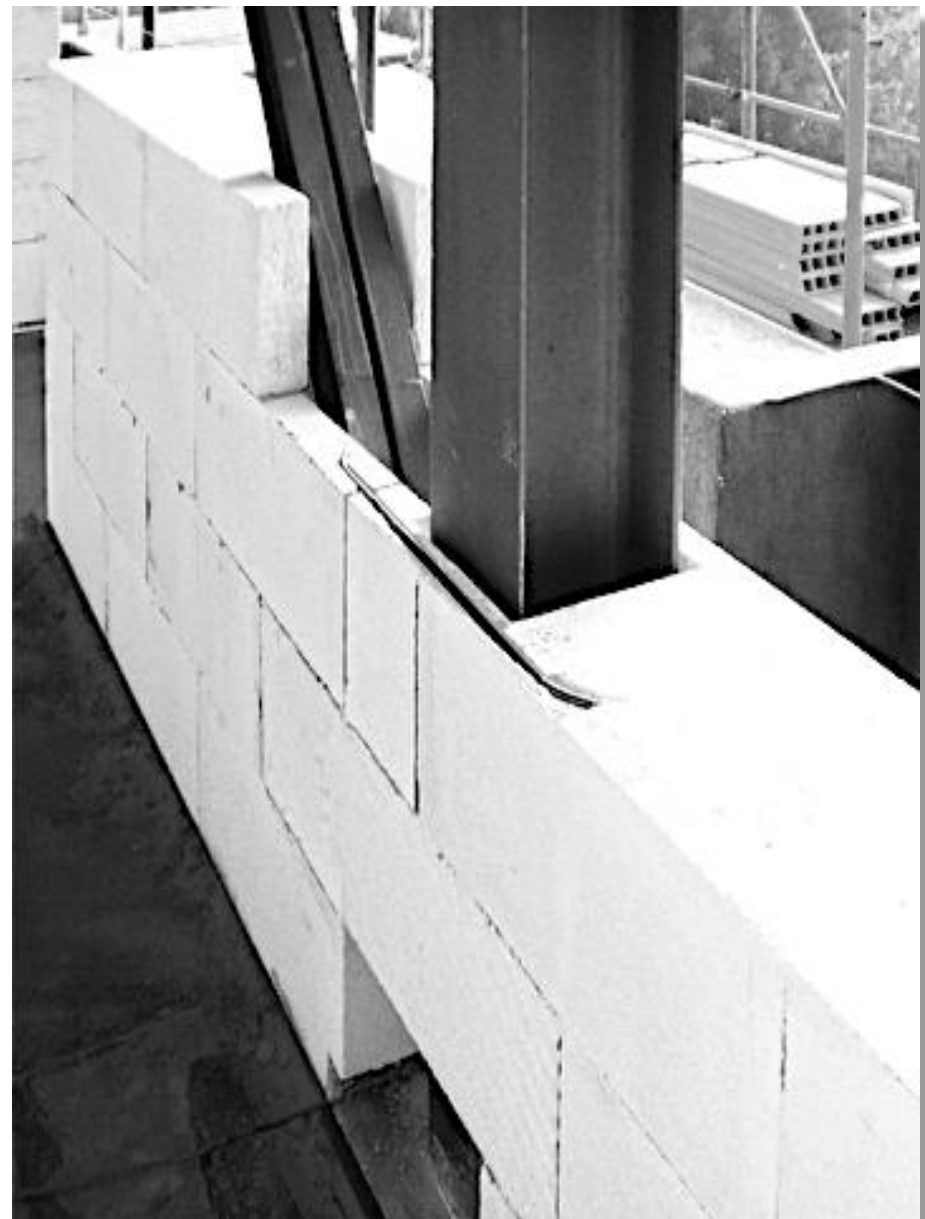
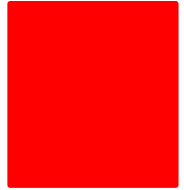
**mattONE**

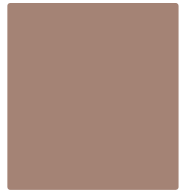
Marco Toro













*Facile  
esecuzione  
delle tracce e  
dei cavedii*



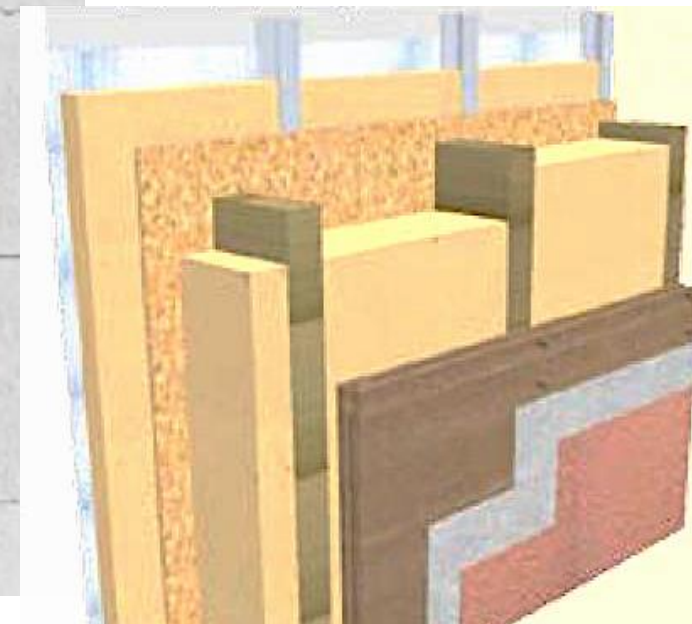
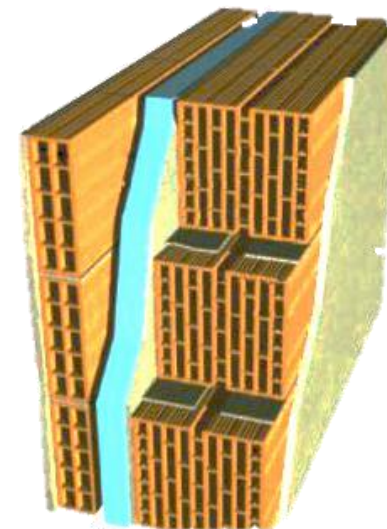




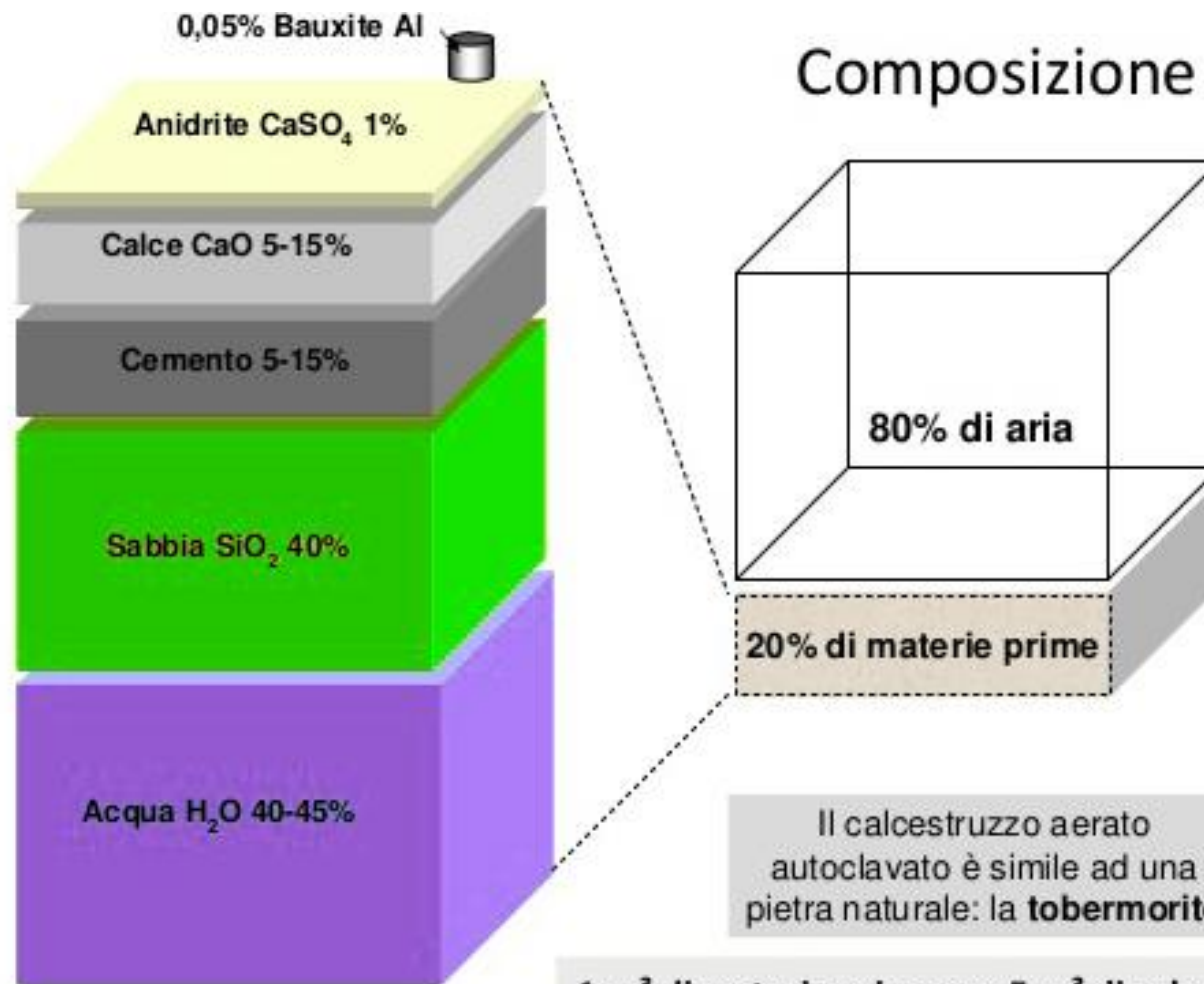




- semplificazione
- garanzia dei risultati
- per tutte le maestranze

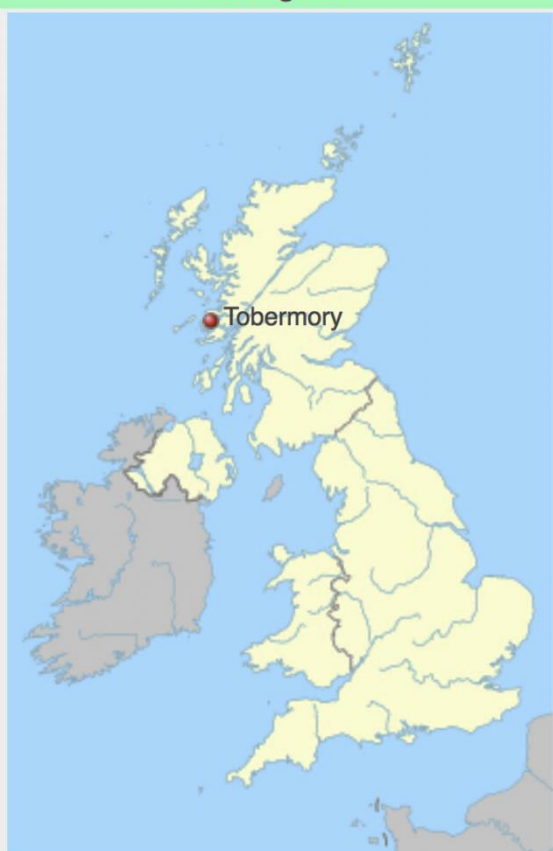


## Composizione



**1 m<sup>3</sup> di materie prime per 5 m<sup>3</sup> di calcestruzzo cellulare**

### Cartografia

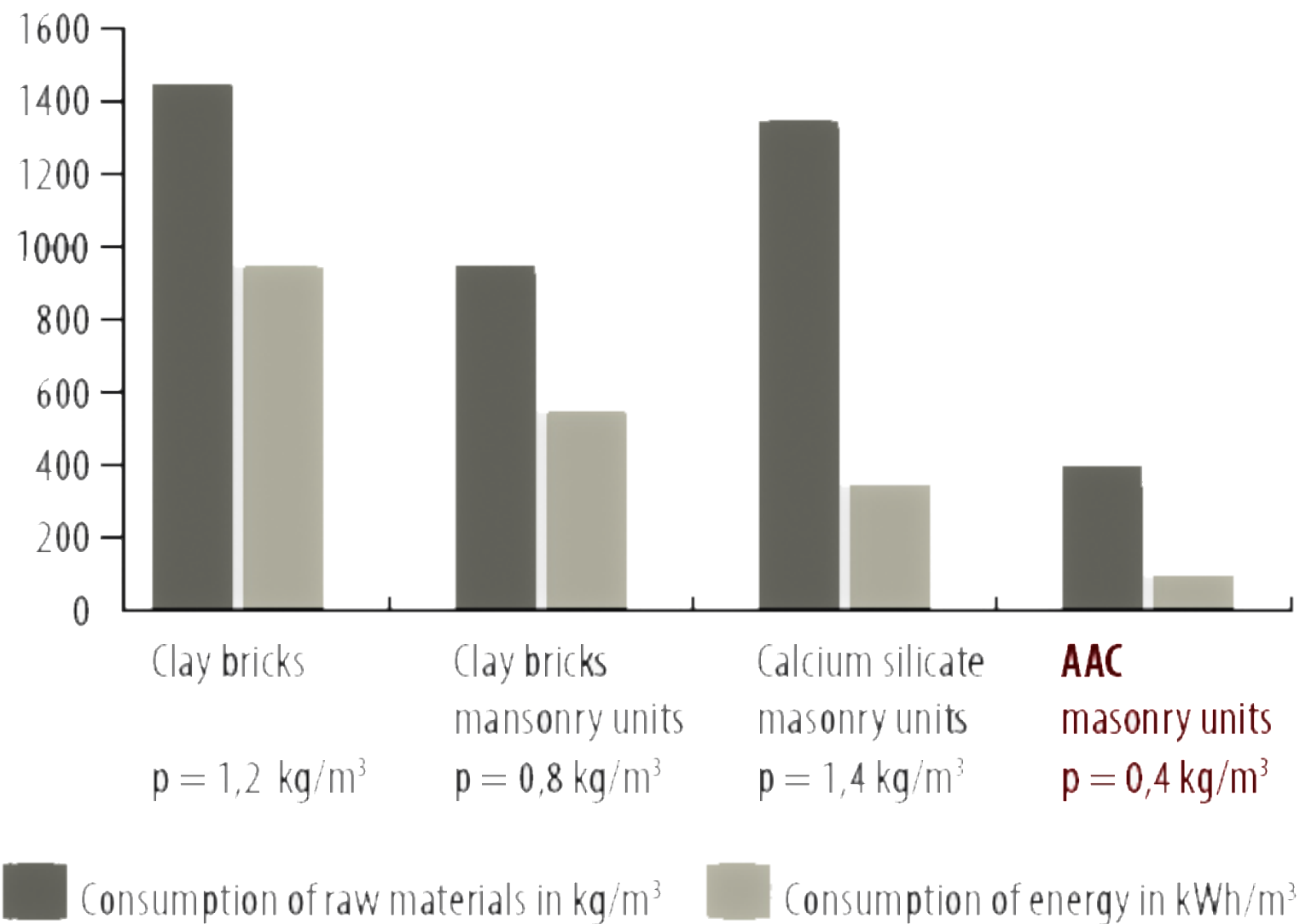


# 220°C

## Calcio Silicio e Acqua



### Consumption of raw materials and energy needed for production\*



Clay bricks

$\rho = 1,2 \text{ kg/m}^3$

Clay bricks  
masonry units

$\rho = 0,8 \text{ kg/m}^3$

Calcium silicate  
masonry units

$\rho = 1,4 \text{ kg/m}^3$

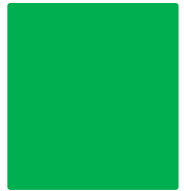
**AAC**  
masonry units

$\rho = 0,4 \text{ kg/m}^3$

*...Il motore del 2000 sarà bello e lucente  
Sarà veloce e silenzioso, sarà un motore delicato  
Avrà lo scarico calibrato e un odore che non inquina...  
Lo potrà respirare un bambino o una bambina...*

*(Lucio Dalla)*





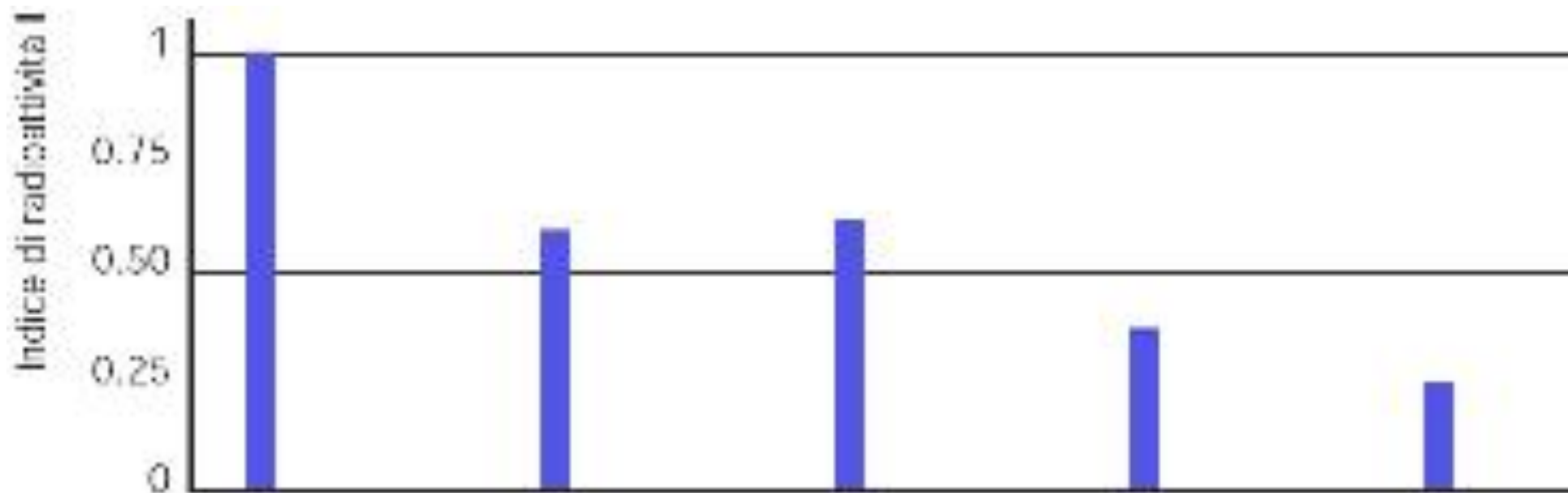












**INDICE DI RADIOATTIVITÀ**

$$I = 0.24 \div 0.33$$

Figura 5 – Tamponamento con muratura in AAC sp. 30 cm non armata

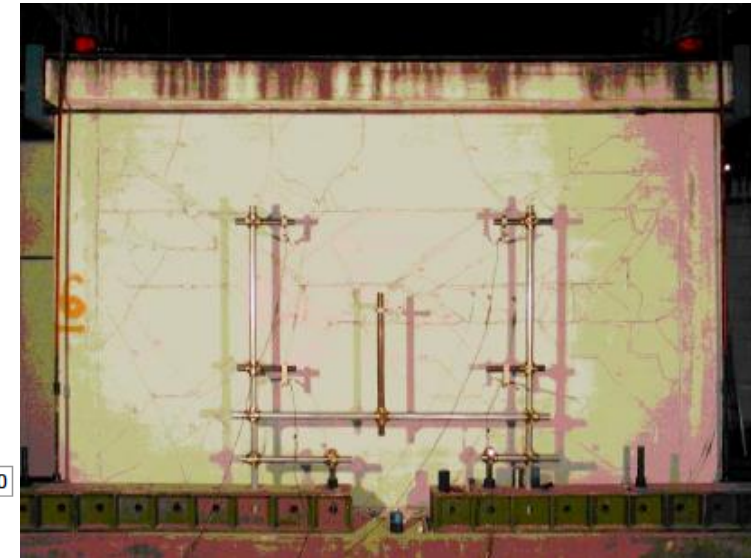
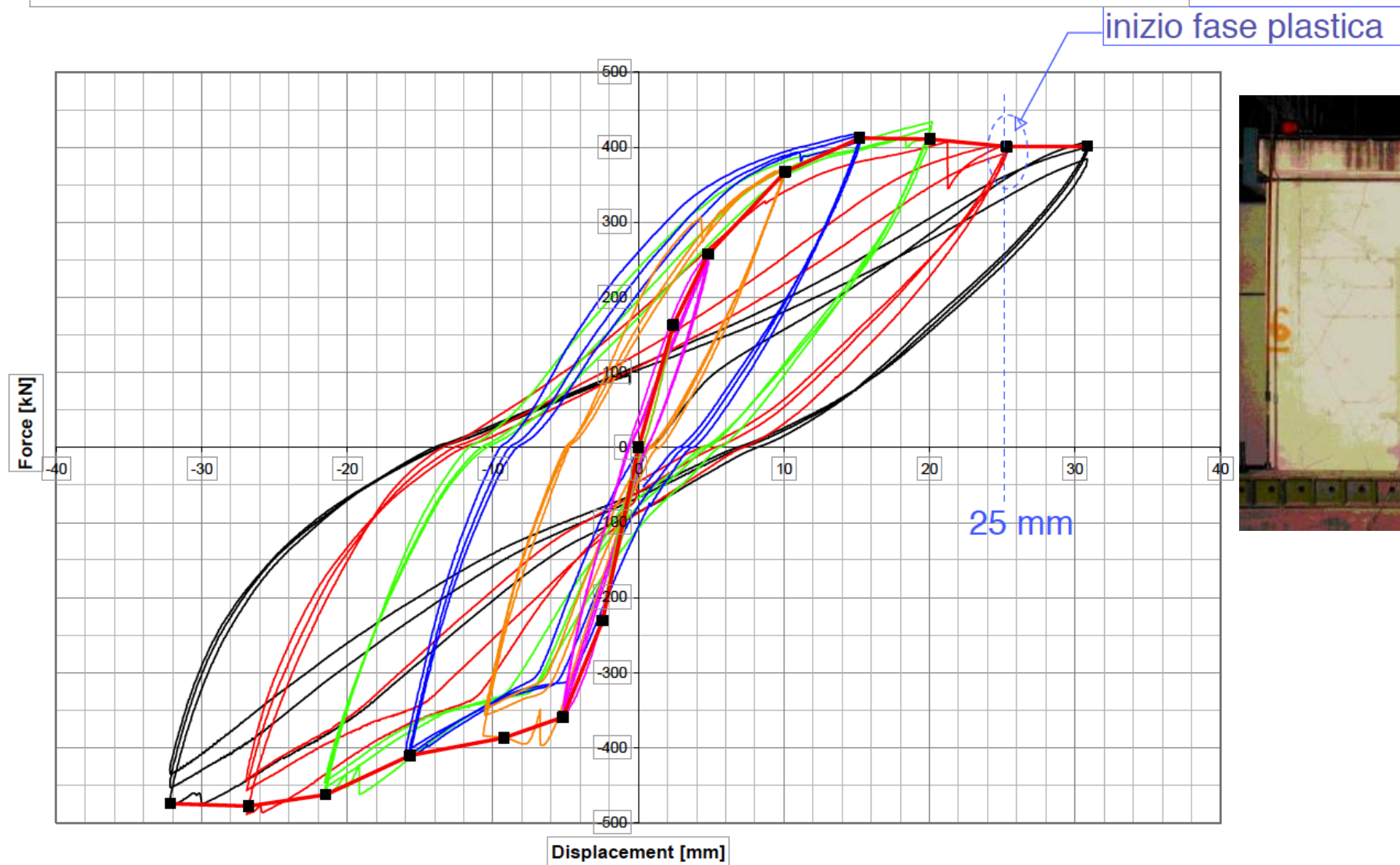


Figura 7 – Tamponamento con armatura ( $2\Phi 6/50$  cm) nelle scanalature dei blocchi

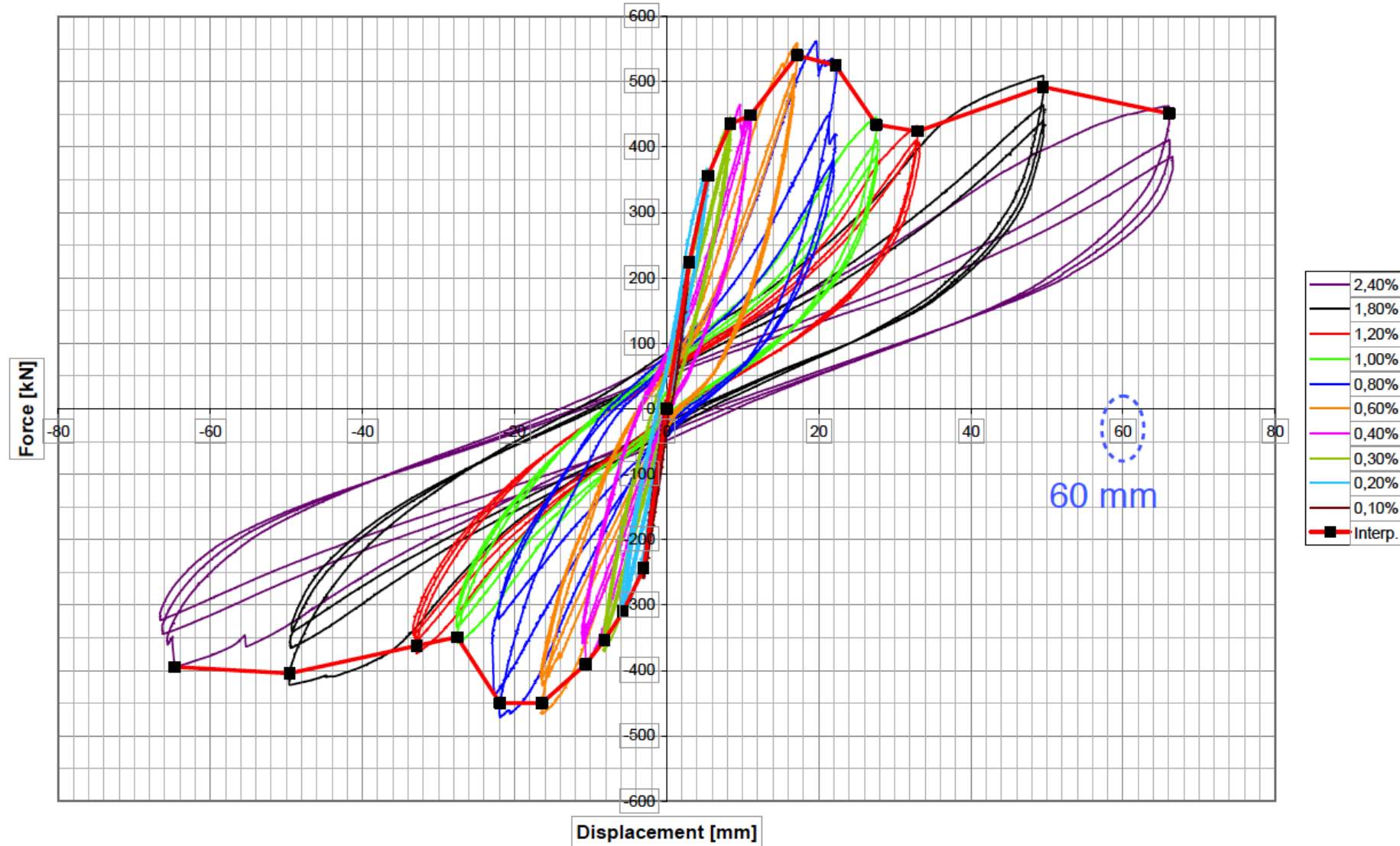
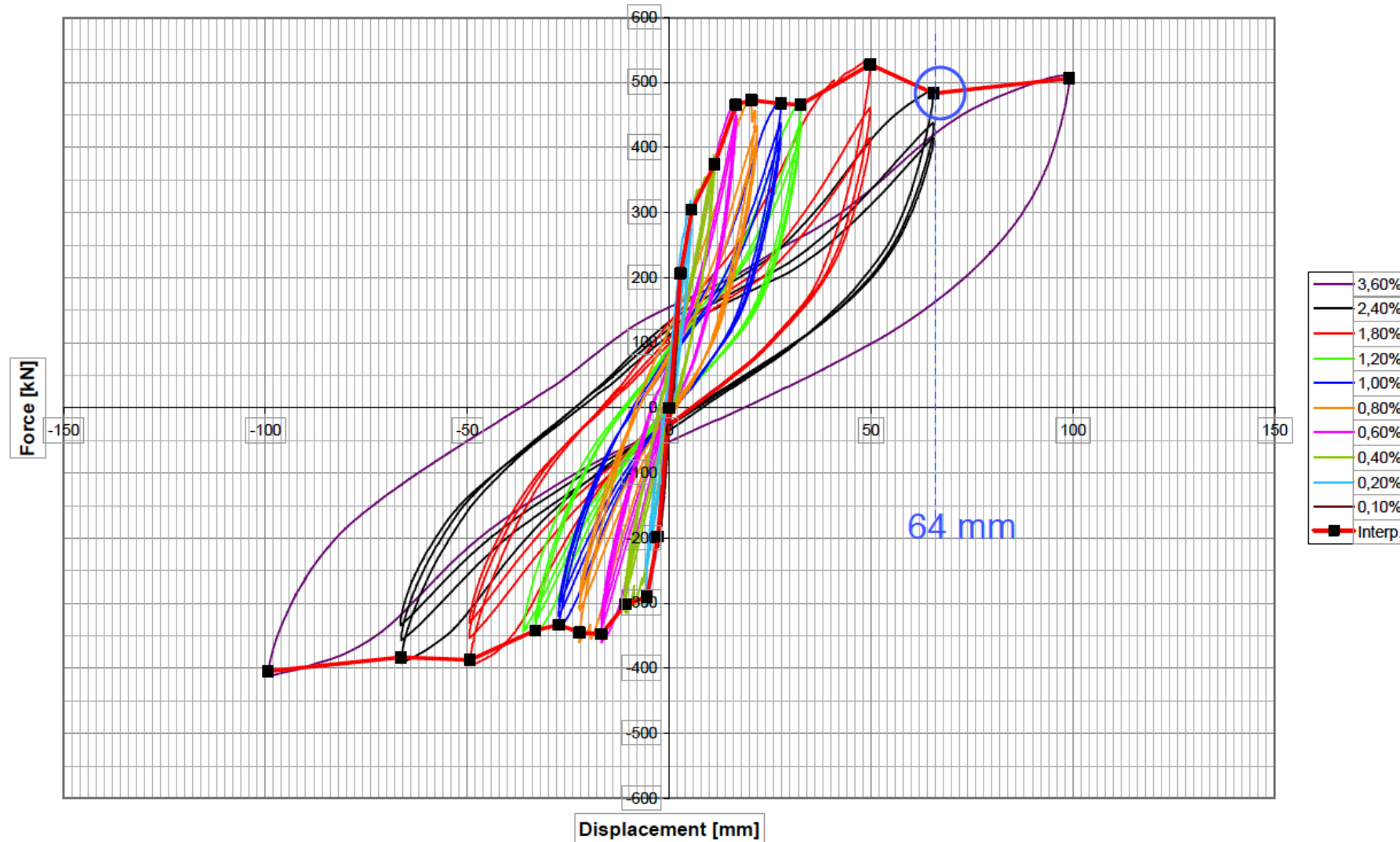
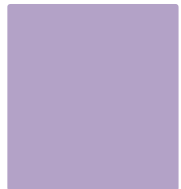


Figura 8 – Tamponamento con armatura (tralicci piatti) nei letti di malta (ogni 50 cm)









ospedale



Hotel Federico II

Edificio Industriale Aterno Vetro

Palazzina f.lli Carratelli - Onna



[tour.edilportale.com](http://tour.edilportale.com)



# edilportale<sup>®</sup>

## TOUR 2018

grazie per l'attenzione

[tour.edilportale.com](http://tour.edilportale.com)

