

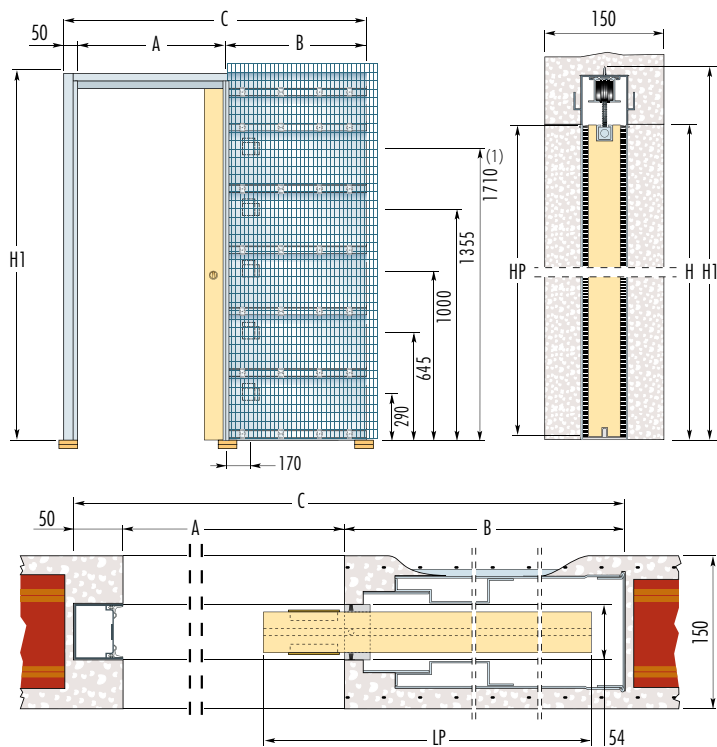


# Eclisse SYNTESIS® LUCE SD

## SOLID WALL

### Counterframe for single doors without jambs and architraves wiring ready

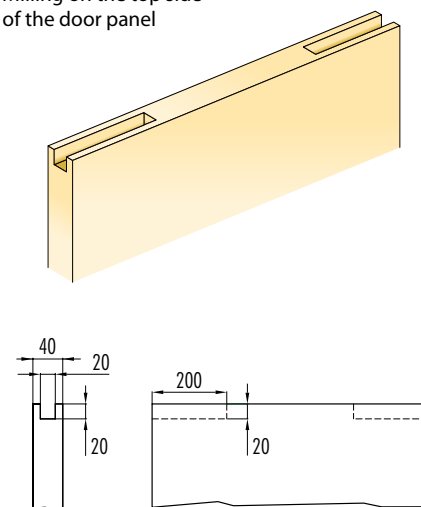
SYNTESIS® LUCE combines the integrated structure of the SYNTESIS® LINE profile with a box-frame fitted with wiring conduits, so that the wall in which the counterframe fits can have light points, switches, dimmer controls, sockets and thermostats.



### Avvertenze

The door panel for SYNTESIS® LUCE must be milled along the upper and lower profiles, as shown in the drawings (milling not required on all-glass doors)

#### Milling on the top side of the door panel



STANDARD COUNTERFRAME				DOOR PANEL*		NOTE	
MAX. PASSAGE SIZE A x H	B	OVERALL DIMENSION C x H1	FINISHED WALL	INTERNAL SPACE	LP		HP
600 x 2000/2100	737	1380 x 2060/2160	150	54	615	1992/2092	<b>Non standard sizes:</b> It's possible to produce pocket doors with width from 600 mm to 1300 mm and height from 1000 mm to 2700 mm (measures every mm 50). Width in-between measures (e.g. A= 650 mm) require a made-to-measure door panel. ▶ The passage <b>A</b> is 7 mm reduced. ▶ Max door thickness mm 43 (including any aluminum frames). ▶ Standard door's weight is 80 kg.
700 x 2000/2100	837	1580 x 2060/2160	150	54	715	1992/2092	
800 x 2000/2100	937	1780 x 2060/2160	150	54	815	1992/2092	
900 x 2000/2100	1037	1980 x 2060/2160	150	54	915	1992/2092	
1000 x 2000/2100	1137	2180 x 2060/2160	150	54	1015	1992/2092	

### WARNING

▶ Because of production needs and safety reasons of the system, Eclisse expects that the door panel is left protruding 80 mm.

- ▶ If needed, the adjustable rear stop door allows to modify the real passage size
- ▶ In order to make the door completely disappear a passing routing is required
- ▶ The routing for the door guide must have the following dimensions: 7 x 15 mm
- ▶ Max depth of box 40 mm (2 electrical boxes are supplied)
- ▶ Electrical boxes heights are fixed

dimensions are given in mm

\* Wood door panel measures only (1) Missing box for H=2000 mm

### AVAILABLE ACCESSORIES



#### Vitro

Adapter for all-glass doors with stainless steel veil (picture 1), accessories for stop jamb and brush holder in aluminum coated with paintable PVC (picture 2).

- ▶ For Double doors model it's required the purchase of two Vitro
- ▶ Vitro is feasible only with all-glass door panel with max thickness 10 mm. Applications in glass fusing are not allowed.

#### Under Door Profile

It prevents sliding problems because of swelling, caused by moisture

### ADVANTAGES - The counterframes by ECLISSE are:

- ▶ Robust for greater reliability and duration.
- ▶ They can be checked to have doors always sliding properly.

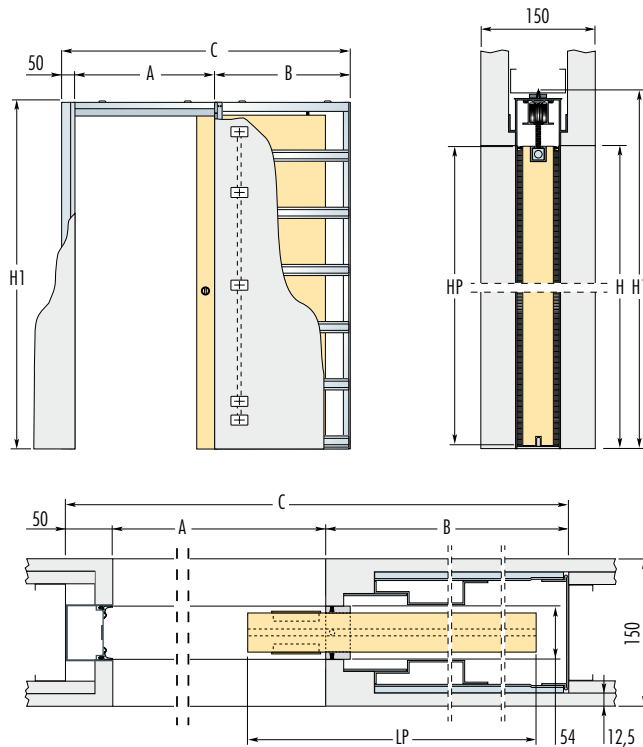


# Eclisse SYNTESIS® LUCE SD

version **STUD WALL**

**Counterframe for single doors without jambs and architraves wiring ready**

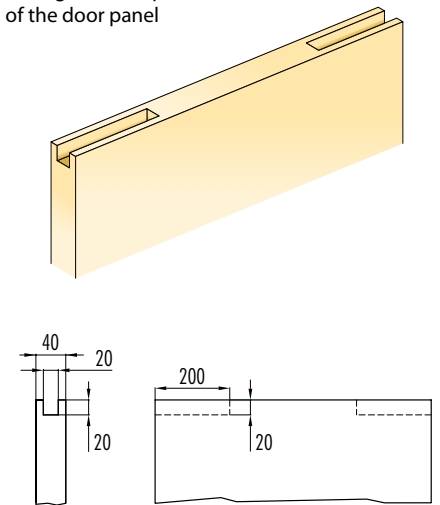
SYNTESIS® LUCE combines the integrated structure of the SYNTESIS® LINE profile with a box-frame fitted with wiring conduits, so that the wall in which the counterframe fits can have light points, switches, dimmer controls, sockets and thermostats.



## Avvertenze

The door panel for SYNTESIS® LUCE must be milled along the upper and lower profiles, as shown in the drawings (milling not require on all-glass doors)

Milling on the top side of the door panel



STANDARD COUNTERFRAME				DOOR PANEL*		NOTE
MAX. PASSAGE SIZE A x H	B	OVERALL DIMENSION C x H1	FINISHED WALL	INTERNAL SPACE	LP	HP
600 x 2000/2100	737	1380 x 2060/2160	150	54	615	1992/2092
700 x 2000/2100	837	1580 x 2060/2160	150	54	715	1992/2092
800 x 2000/2100	937	1780 x 2060/2160	150	54	815	1992/2092
900 x 2000/2100	1037	1980 x 2060/2160	150	54	915	1992/2092
1000 x 2000/2100	1137	2180 x 2060/2160	150	54	1015	1992/2092

**Non standard sizes:** It's possible to produce pocket doors with width from 600 mm to 1300 mm and height from 1000 mm to 2700 mm (measures every mm 50). Width in-between measures (e.g. A= 650 mm) require a made-to-measure door panel.  
 ▶ The passage **A** is 7 mm reduced.  
 ▶ Max door thickness mm 43 (including any aluminum frames).  
 ▶ Standard door's weight is 80 kg.

### WARNING

- ▶ Because of production needs and safety reasons of the system, Eclisse expects that the door panel is left protruding 80 mm.
- ▶ If needed, the adjustable rear stop door allows to modify the real passage size
- ▶ In order to make the door completely disappear a passing routing is required
- ▶ The routing for the door guide must have the following dimensions: 7 x 15 mm
- ▶ Max depth of box 40 mm (2 electrical boxes are supplied)
- ▶ Electrical boxes heights are fixed
- \* Wood door panel measures only

dimensions are given in mm

### AVAILABLE ACCESSORIES



#### Vitro

Adapter for all-glass doors with stainless steel veil (picture 1), accessories for stop jamb and brush holder in aluminum coated with paintable PVC (picture 2).

- ▶ For Double doors model it's required the purchase of two Vitro
- ▶ Vitro is feasible only with all-glass door panel with max thickness 10 mm. Applications in glass fusing are not allowed.

#### Under Door Profile

It prevents sliding problems because of swelling, caused by moisture

### ADVANTAGES - The counterframes by ECLISSE are:

- Robust for greater reliability and duration.
- They can be checked to have doors always sliding properly.

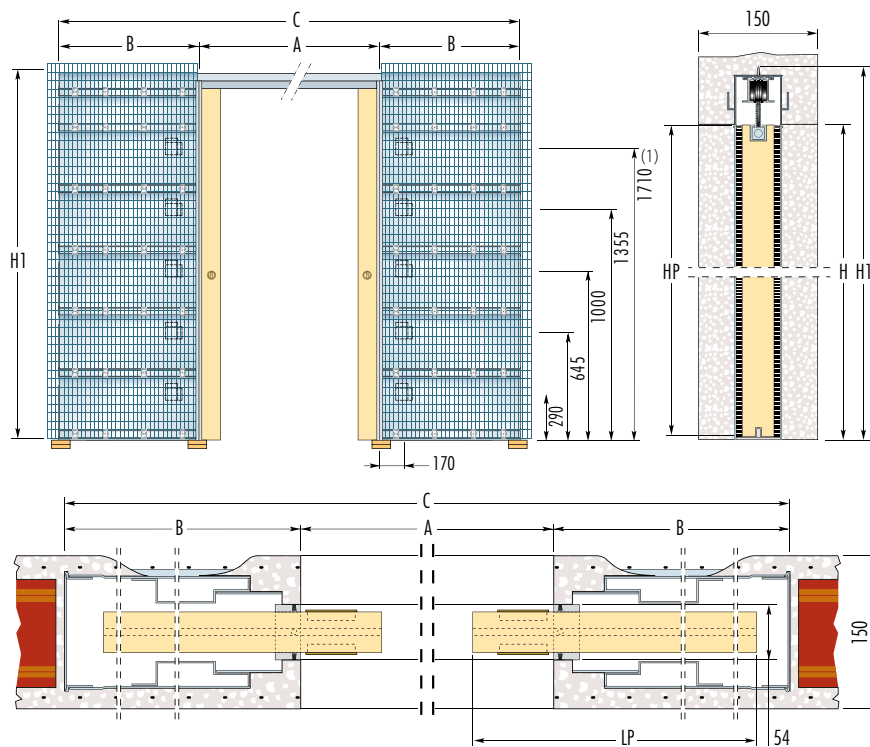
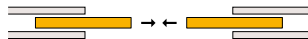
# Eclisse SYNTESIS® LUCE DD

version **SOLID WALL**



## Counterframe for double doors without jambs and architraves wiring ready

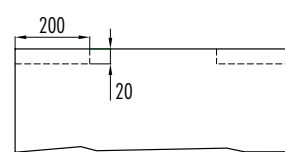
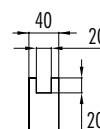
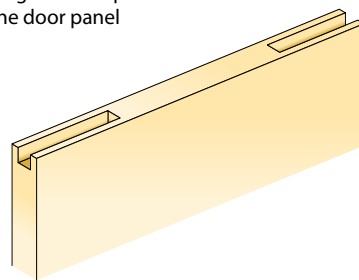
SYNTESIS® LUCE combines the integrated structure of the SYNTESIS® LINE profile with a box-frame fitted with wiring conduits, so that the wall in which the counterframe fits can have light points, switches, dimmer controls, sockets and thermostats.



### Avvertenze

The door panel for SYNTESIS® LUCE must be milled along the upper and lower profiles, as shown in the drawings (milling not require on all-glass doors)

Milling on the top side of the door panel



STANDARD COUNTERFRAME				DOOR PANEL*		NOTE	
MAX. PASSAGE SIZE A x H	B	OVERALL DIMENSION C x H1	FINISHED WALL	INTERNAL SPACE	LP		HP
600+600 x 2000/2100	737	2660 x 2060/2160	150	54	615	1992/2092	<b>Non standard sizes:</b> It's possible to produce pocket doors with width from 1200 mm to 2600 mm and height from 1000 mm to 2700 mm (height measures <b>H</b> every 50 mm, width measures <b>A</b> every 100 mm). ▶ The passage <b>A</b> is 14 mm reduced. ▶ Max door thickness mm 43 (including any aluminum frames). ▶ Standard door's weight is 80 kg.
700+700 x 2000/2100	837	3060 x 2060/2160	150	54	715	1992/2092	
800+800 x 2000/2100	937	3460 x 2060/2160	150	54	815	1992/2092	
900+900 x 2000/2100	1037	3860 x 2060/2160	150	54	915	1992/2092	
1000+1000 x 2000/2100	1137	4260 x 2060/2160	150	54	1015	1992/2092	

### WARNING

▶ Because of production needs and safety reasons of the system, Eclisse expects that the door panel is left protruding 80 mm.

- ▶ If needed, the adjustable rear stop door allows to modify the real passage size
- ▶ In order to make the door completely disappear a passing routing is required
- ▶ The routing for the door guide must have the following dimensions: 7 x 15 mm
- ▶ Max depth of box 40 mm (4 electrical boxes are supplied)
- ▶ Electrical boxes heights are fixed

dimensions are given in mm

\* Wood door panel measures only (1) Missing box for **H**=2000 mm

### AVAILABLE ACCESSORIES



#### Vitro

Adapter for all-glass doors with stainless steel veil (picture 1), accessories for stop jamb and brush holder in aluminum coated with paintable PVC (picture 2).

- ▶ For Double doors model it's required the purchase of two Vitro
- ▶ Vitro is feasible only with all-glass door panel with max thickness 10 mm. Applications in glass fusing are not allowed.

#### Under Door Profile

It prevents sliding problems because of swelling, caused by moisture

### ADVANTAGES - The counterframes by ECLISSE are:

- Robust for greater reliability and duration.
- They can be checked to have doors always sliding properly.

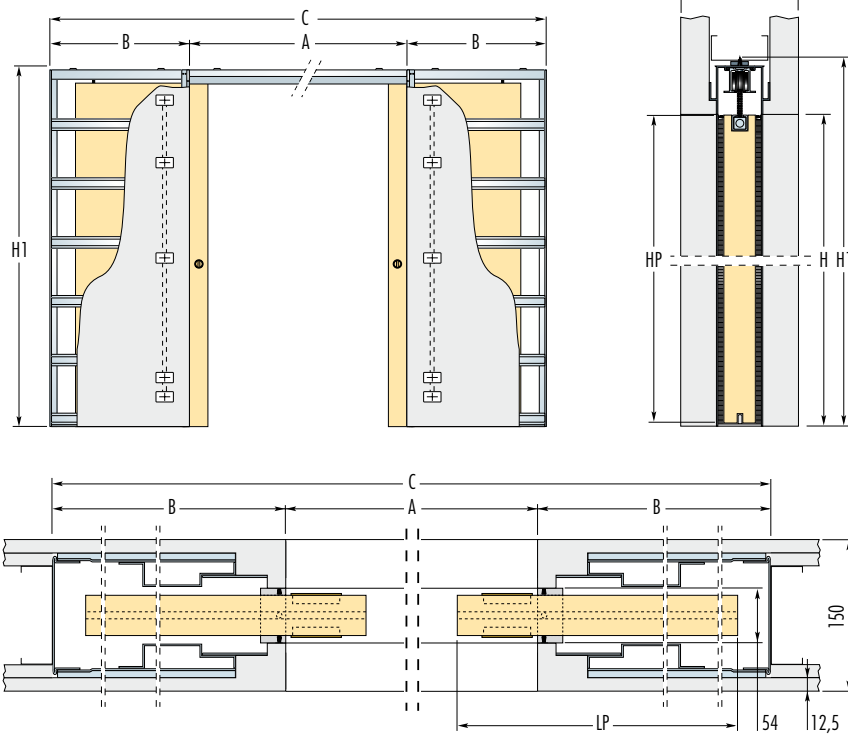
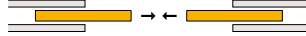


# Eclisse SYNTESIS® LUCE DD

version **STUD WALL**

## Counterframe for double doors without jambs and architraves wiring ready

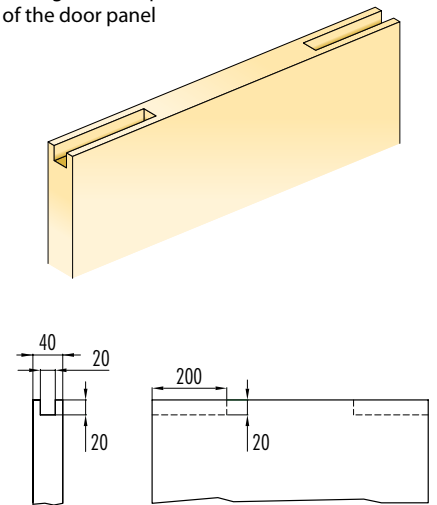
SYNTESIS® LUCE combines the integrated structure of the SYNTESIS® LINE profile with a box-frame fitted with wiring conduits, so that the wall in which the counterframe fits can have light points, switches, dimmer controls, sockets and thermostats.



### Avvertenze

The door panel for SYNTESIS® LUCE must be milled along the upper and lower profiles, as shown in the drawings (milling not require on all-glass doors)

#### Milling on the top side of the door panel



STANDARD COUNTERFRAME				DOOR PANEL*		NOTE
MAX. PASSAGE SIZE A x H	B	OVERALL DIMENSION C x H1	FINISHED WALL	INTERNAL SPACE	LP	
600+600 x 2000/2100	737	2660 x 2060/2160	150	54	615	1992/2092
700+700 x 2000/2100	837	3060 x 2060/2160	150	54	715	1992/2092
800+800 x 2000/2100	937	3460 x 2060/2160	150	54	815	1992/2092
900+900 x 2000/2100	1037	3860 x 2060/2160	150	54	915	1992/2092
1000+1000 x 2000/2100	1137	4260 x 2060/2160	150	54	1015	1992/2092

**Non standard sizes:** It's possible to produce pocket doors with width from 1200 mm to 2600 mm and height from 1000 mm to 2700 mm (height measures **H** every 50 mm, width measures **A** every 100 mm).

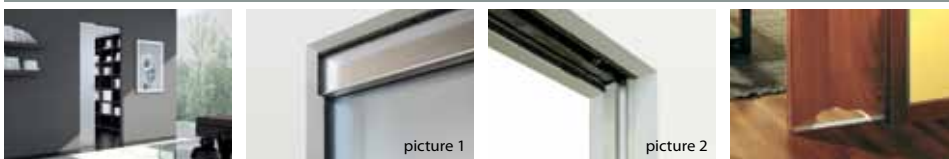
- ▶ The passage **A** is 14 mm reduced.
- ▶ Max door thickness mm 43 (including any aluminum frames).
- ▶ Standard door's weight is 80 kg.

### WARNING

- ▶ Because of production needs and safety reasons of the system, Eclisse expects that the door panel is left protruding 80 mm.
- ▶ If needed, the adjustable rear stop door allows to modify the real passage size
- ▶ In order to make the door completely disappear a passing routing is required
- ▶ The routing for the door guide must have the following dimensions: 7 x 15 mm
- ▶ Max depth of box 40 mm (4 electrical boxes are supplied)
- ▶ Electrical boxes heights are fixed
- \* Wood door panel measures only

dimensions are given in mm

### AVAILABLE ACCESSORIES



#### Vitro

Adapter for all-glass doors with stainless steel veil (picture 1), accessories for stop jamb and brush holder in aluminum coated with paintable PVC (picture 2).

- ▶ For Double doors model it's required the purchase of two Vitro
- ▶ Vitro is feasible only with all-glass door panel with max thickness 10 mm. Applications in glass fusing are not allowed.

#### Under Door Profile

It prevents sliding problems because of swelling, caused by moisture

### ADVANTAGES - The counterframes by ECLISSE are:

- ▶ Robust for greater reliability and duration.
- ▶ They can be checked to have doors always sliding properly.